

PFS -G- Jacob Isotalo Bath Public School
Indoor Rules

*Jacob Isotalo has been given permission to conduct MAAC modelling activities indoors and fully understand and agree any permission granted applies to indoor activities **only** – no exceptions*

Administrative

Jacob Isotalo

Location: Bath Public School
247 Church St, Bath, ON.
44.187, -76,780

The gym will be used for model operation.

The site will be used on a regular basis throughout the winter and spring for indoor RPA flying. It will be used multiple times per week on weekdays, most weeks of the winter. It will primarily be used in the afternoon from between 6-10 pm.

Conditions for use - All persons using this modelling site must:

1. be MAAC members in good standing.
2. guests invited by Jacob Isotalo, and
3. agree to follow the MAAC Safety code and all other site rules.

Pilots must demonstrate safe control of their model(s) to be allowed to fly.

A copy of the site rules and regulations document will be provided to all pilots invited to the site and a copy will be available at the site during model operations.

In the event of an emergency, phone 9-11. The civic address to be provided to first responders is:

247 Church St, Bath, ON

The nearest fire station is located at 241 Church St, Bath, ON, adjacent to the school. The Kingston General Hospital is approximately 30 minutes away by car and its emergency department is located at 41 King St W, Kingston, ON.

Normal operating procedures and Site safety rules

This site allows the following modeling categories:

mRPAS, RPAS

This site is used for indoor RPA flying. All models must weigh below 1000 grams and quadcopters are allowed to have a maximum blade diameter of 5.1 inches.

For members operating mRPAS/RPAS at this site:

Flight operations will be inside of the gym. Pilots, members of flight operations and any invited guests will be stationed together during flight operations at a point adjacent to a side wall. A safe no-fly buffer area between flying stations and model operations will be decided upon prior to flying, based on model size, speed and prop diameter.

1. All pre-flight inspections or assembly shall be done in the designated area.
2. Batteries shall not be connected to electric powered models unless the model is restrained in the start-up area, or the propulsion system deactivated/de-armed or otherwise inoperative – no exceptions.
3. The direction and location of modeling/take-off landing, and traffic pattern will be determined by the track layout and communicated to all pilots before flying commences.
4. Recovery of RPA that land/crash in the modelling/flying area will be done in agreement with all other modellers/pilots flying. Do not fly/operate a model directly over/near other persons recovering a model.
5. MAAC “spotters” are required for all pilots flying using FPV at our site and are not required for models flown line of sight. The following are site procedures for ensuring bystander safety:
 - a. Only invited guests, pilots and other members of flight operations, including spotters, will be allowed to enter the gym while in use.
 - b. Gym entrances will be blocked off and “No Entry” signs will be posted during flight operations.
 - c. When any member or other person spots a bystander that might come into the modeling area unsafely, they are to yell out “BYSTANDER” in a loud voice.
 - d. ALL modellers must immediately stop modeling activities in that area and if possible, land/return to the pit area as soon as safely able.
 - e. When the bystander’s safety is no longer a threat, the person who gave the warning shall yell “ALL CLEAR”, or the modelers/pilots may make that determination themselves, and resume modeling/flying.

Emergency or safety procedures

6. If there is any type of near miss or safety concern between a model and a bystander, ALL modelling SHALL cease immediately. The members involved should fill out a

MAAC reportable occurrence report and submit that to MAAC and the club/site/event organizer and follow MAAC policy with the following exceptions:

- a. If the member(s) involved believe the risk was very minimal, they may complete their own self declaration or risk assessment using the MAAC form, and resume modelling.
- b. If the member or Club/site/event organizer deems the event serious, modelling will not resume until members are given permission by the site/event organizer – in writing.
- c. If there is actual contact between a model and a bystander – all modelling will cease until MAAC confirms we may resume operations.
- d. This process is for your protection.

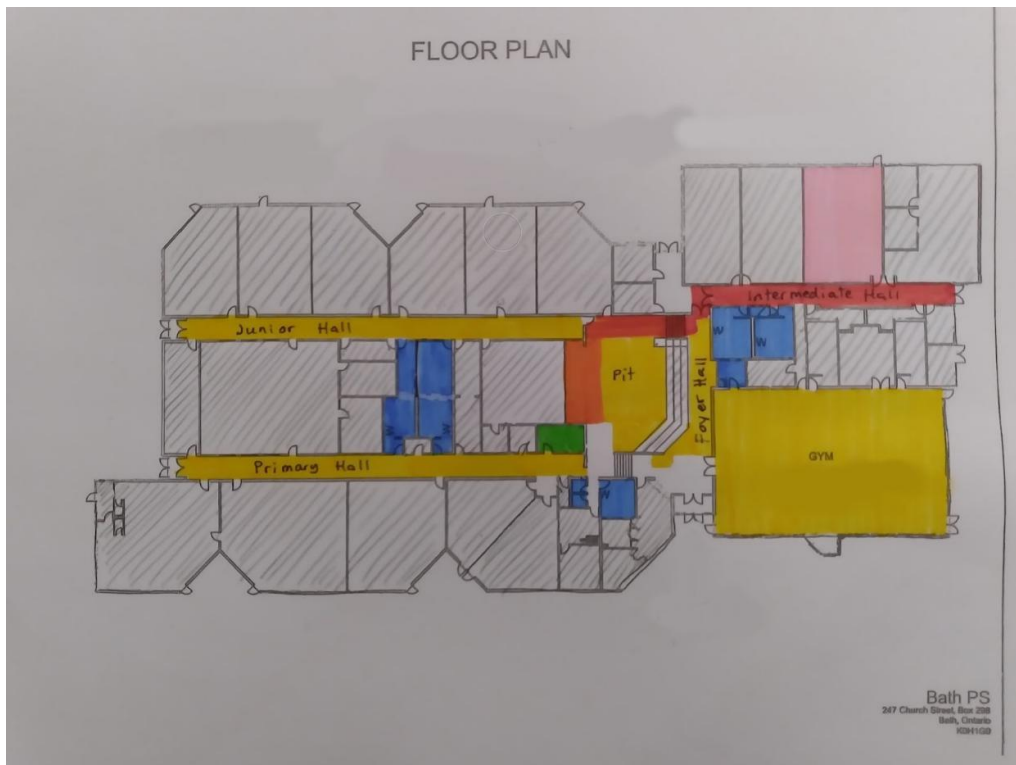
7. Site emergency procedures:

- a. Emergency equipment is available on site, including a first aid kit, defibrillator, fire extinguishers and emergency fire hoses.
- b. Custodial staff will be on site during all facility use
- c. Exit locations are clearly marked and shown on the attached facility diagram.

8. There are no other risk mitigating strategies required at the Bath Public School modelling site.

9. The site organizer will review these rules at least once a year.

Site Diagram



Parking is located at the side of the building